

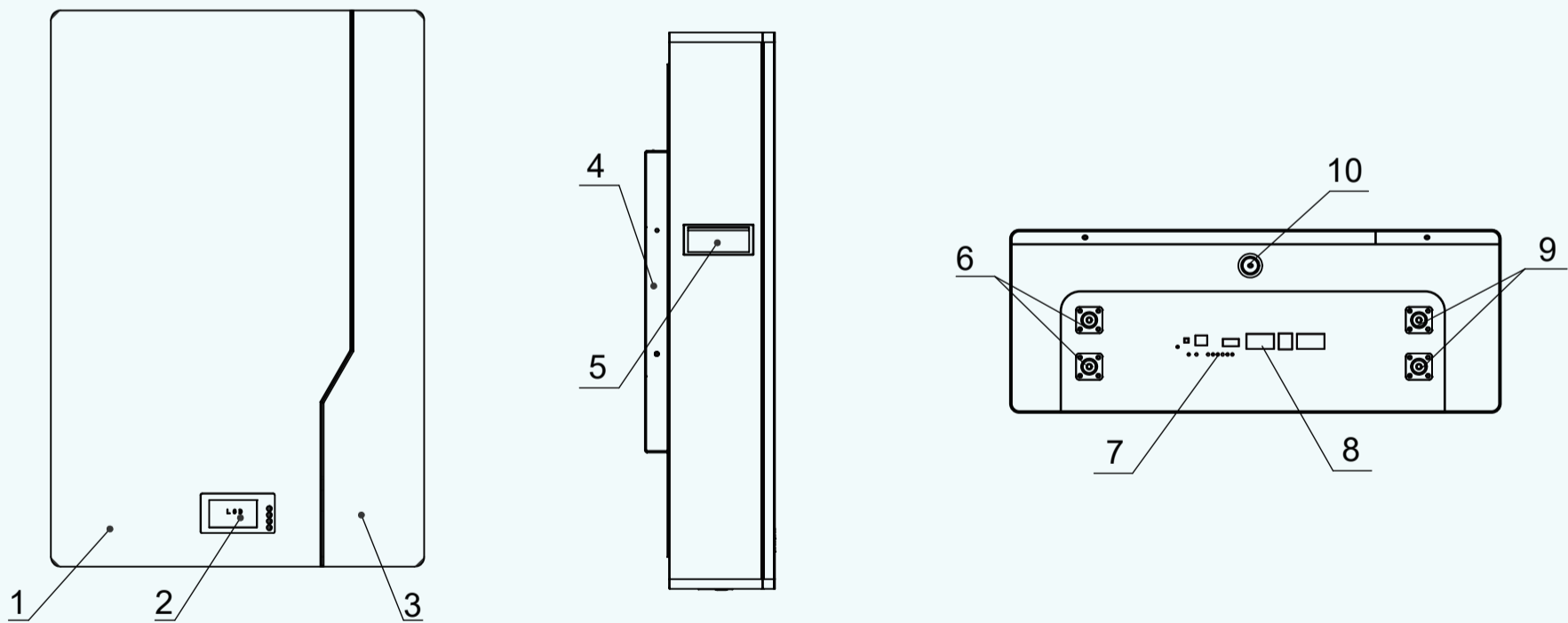
51.2V 100Ah Energy Storage LiFePO₄ Battery

Features

- ◆ LCD monitor the energy storage power data and operating status.
- ◆ High-quality LiFePO₄ battery, safety, deep cycle and long lifespan.
- ◆ Product round edge be more safe, avoid accident collision.
- ◆ External main switch to reduce product power consumption and improve safety.
- ◆ Wall brackets, which can meet the installation and use of different place.
- ◆ BMS built inside, over-voltage, over-load, over-temperature protection, etc.
- ◆ Compatible, can be connected to different types of loads within the voltage range.
- ◆ Support up to 15 modules in parallel.



Structural parts description



1	White plate	6	M6 Positive terminal (2pcs)
2	LCD display	7	Battery indicator
3	Black plate	8	RS485 /CAN
4	Wall mounted bracket	9	M6 Negative terminal (2pcs)
5	Handle	10	OFF/ON

51.2V 100Ah Energy Storage LiFePO₄ Battery

Parameters

	Model	M16S100BL-V
Basic Characteristics	Nominal Voltage	51.2V
	Nominal Capacity	100Ah
	Efficiency	≥96%
	Inner Resistance	7mΩ
	Cell Type	LiFePO ₄
Charging Characteristics	Charge Voltage	58.4V
	Standard Charging Current	20A
	Max.Continuous Charging Current	100A
Discharge Characteristics	Standard Discharge Current	20A
	Continuous Discharge Current	100A
	Peak Discharge Current	200A(3S)
	Discharge Cut-off Voltage	42V
Environmental Requirements	Charge Temperature Range	0~60°C
	Discharge Temperature Range	-10°C~65°C
	Storage Temperature Range	-5~40°C
	Storage Humidity	65±20%HR
Mechanical Characteristics	Size(LxWxH)	440×170×560mm
	Package Size (L×W×H)	635×512×252mm
	Shell Material	SPCC
	Net Weight	~41kg
	Gross Weight	~43kg
	Package Method	1pcs per carton
Others Characteristics	Cycle Life	≥6000 times
	Self Discharge	2% per month
	SOC Indication	LED Light& LCD Screen
	Communication Protocol	RS485/CAN
	Matching Inverter	Growatt, Goodwe, Deye, Luxpower, SRNE etc

Product application diagram

